

# VILLAGE CONCEPT PLAN

*Step out of your  
imagination and into the  
unspoilt beauty of  
Tenterfield Shire*

*It's humble....*

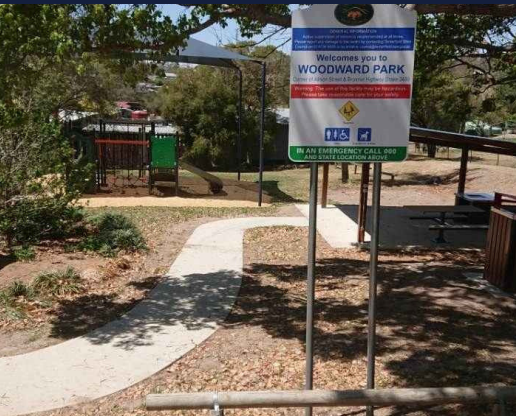
*It's authentic...*

*It's True.*



DRAKE

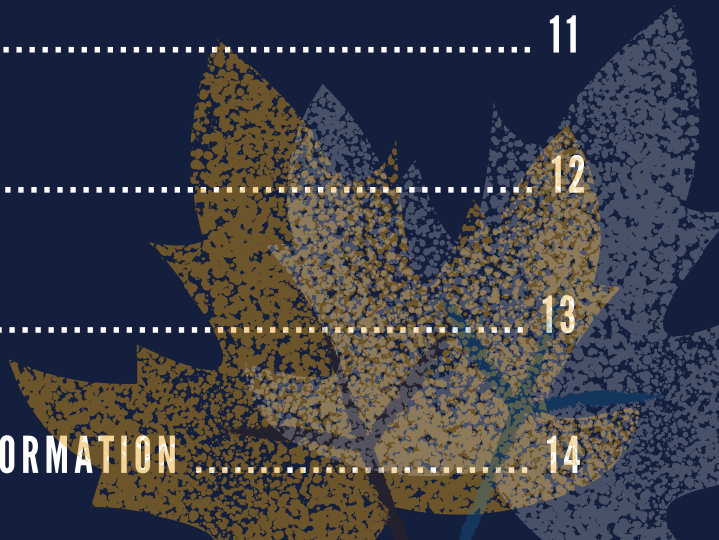




# CONTENTS



<b>PURPOSE OF THIS CONCEPT PLAN .....</b>	<b>3</b>
<b>OUR STORY .....</b>	<b>4</b>
<b>OUR AIMS .....</b>	<b>5</b>
<b>OUR VISION .....</b>	<b>6</b>
<b>MAIN AREA CONCEPT PLAN .....</b>	<b>7</b>
<b>KEY ACTIONS FOR DRAKE.....</b>	<b>8</b>
<b>COMMUNITY CONSULTATION .....</b>	<b>9</b>
<b>PUBLIC OPEN SPACE .....</b>	<b>10</b>
<b>LINKAGE .....</b>	<b>11</b>
<b>LANDSCAPE .....</b>	<b>12</b>
<b>TOURISM .....</b>	<b>13</b>
<b>IMPORTANT INFORMATION .....</b>	<b>14</b>



# PURPOSE OF THIS CONCEPT PLAN

The purpose of the Drake Concept Plan is to provide a strategic direction for future village improvements in order to achieve an environment which provides for the needs of its residents and visitors alike.

The Drake Concept Plan builds on the research and community consultation undertaken by Tenterfield Shire Council and the community of Drake. It identifies the areas that require embellishments in order to create a beautiful, functional and interesting area.

The ideas contained in this plan will also support Drake as an attractive and appealing village within the Tenterfield Shire. With future improvements to the Drake Village it is envisaged more visitors to the region will stop and explore all that it has to offer and create a sense of community pride and ownership of the public spaces within the village.



# OUR STORY

Until the late 1900's cattle and timber were Drake's primary industries, as well as a camp site for wagons, drovers, bullock teams and settlers passing between inland and coastal rivers. A shanty village of hotels, boarding houses, churches, timber cottages and tents in the 1870's, gold was discovered by accident just below Newmans Pinch on the western side of the village.

Drake is situated on the traditional land of the Bundjalung people. Council pays respect to the past, present and future Traditional Custodians and Elders of this nation and the continuation of cultural, spritual and educational practices of Aboriginal and Torres Strait Islander peoples.

Since then Drake has changed many times over, with rushes and declines, riches and poverty, a population of thousands, and barely 100. Timber and cattle grazing industries are still practised, and mining has been reduced to fossicking.

Now Drake offers a variety of bush holidays, home stays, caravan park, camping, fishing, bush walking, horse trail rides and mountain bike riding, as well as a gallery showing local talented artists in the community centre

Drake is an active and community oriented village set in rolling woodlands and forest. The community care about the village and would like minor civic improvements to encourage more people to live and visit the area.

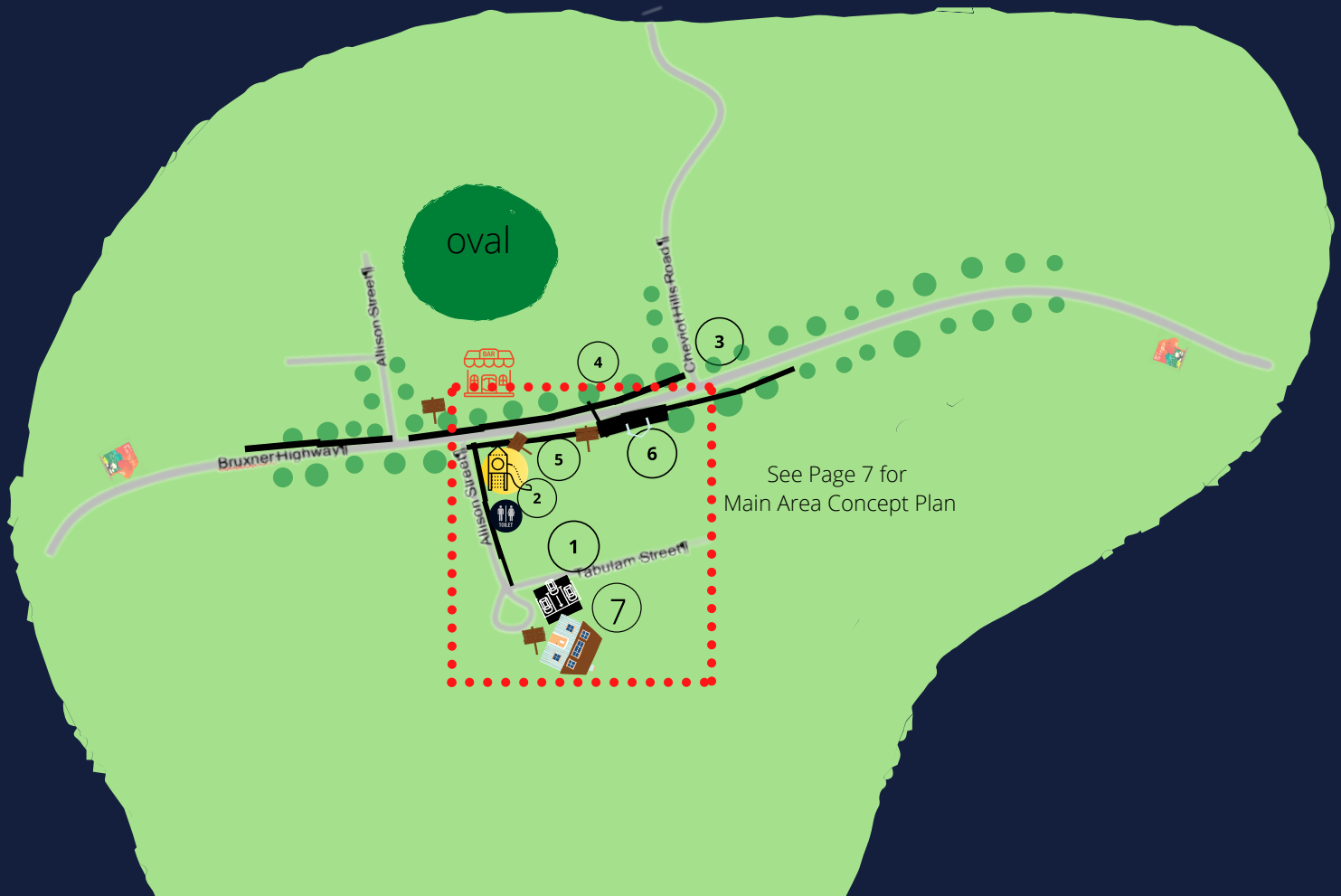


# OUR AIM

1. To create a welcoming village centre which reflects the stunning surrounding natural landscape in which it sits.
2. To encourage visitors passing through the village to stop and visit Drake.
3. To revitalise and embellish the village centre to entice people to stay, play and eat while absorbing the history of Drake.
4. To recognise and actively develop our cultural strengths and unique heritage by creating an attractive heritage tourism trail around the village
5. To establish a community spirit which encourages a quality lifestyle, supports health and social well-being, promotes family life and lifestyle choices.



# OUR VISION



- 1 Installation of parking at Drake Hall
- 2 Installation of new Exercise equipment and Skate/Pump Track
- 3 Repair drainage issues along the Highway
- 4 Proposed Tree Planting along Highway and roads
- 5 Historical/directional interpretive panels including landscaping at the intersection of Duke St & Highway
- 6 Improve bus stop area, safe way crossing and surrounding vehicular areas
- 7 Upgrades to Drake Community Hall

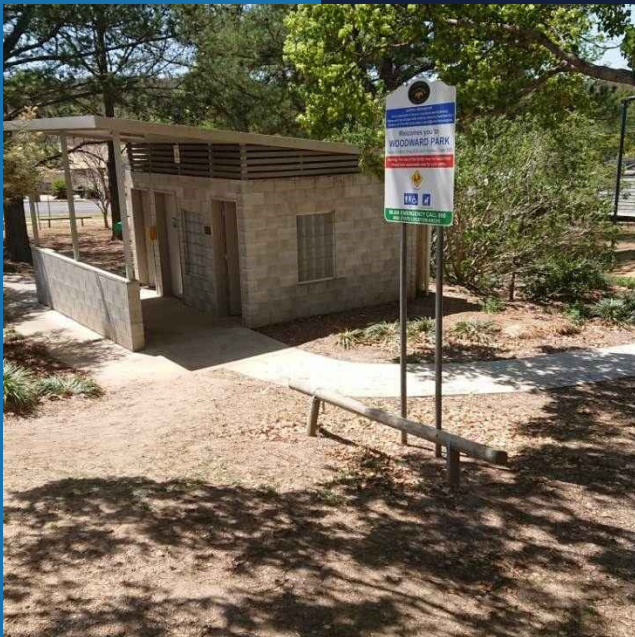
# MAIN AREA CONCEPT PLAN



# KEY ACTIONS FOR DRAKE



Create a welcoming setting within the village



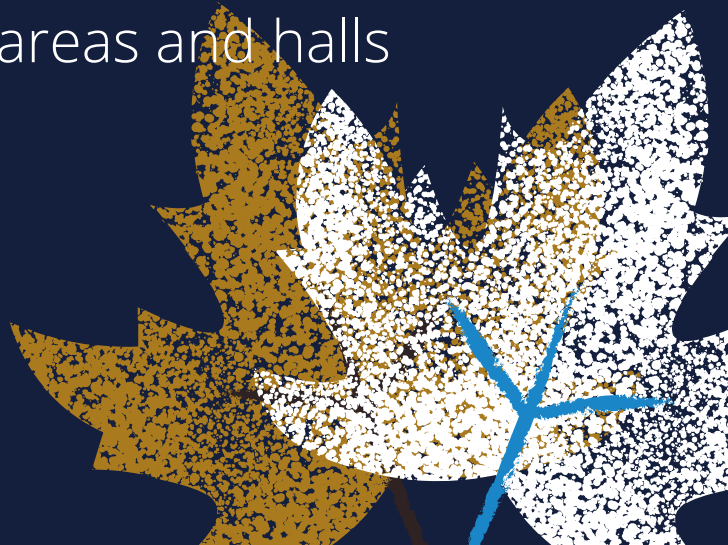
Improvements to the Village Park



Create Interpretive Signs



Improve parking facilities and surrounding for public areas and halls

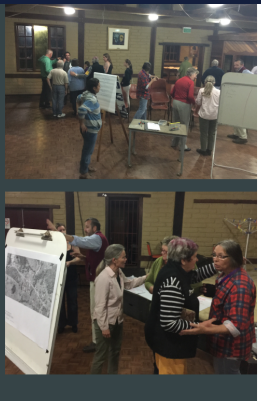




#### Other ideas raised:

Other ideas raised at the community meeting and in the informal community survey included:

- Build an outdoor brick pizza oven
- Incorporate community art and design workshops
- Install a safe bus loading space near the Lunatic Hotel
- Improve drainage near paths
- Build a rest area near the bottom of Long Gully
- Remove the woods in the creek
- Improve the bus stop area – grass swale fill up and block driveway
- Drake is hotter, wetter, colder than Tenterfield, plants and trees will need careful selection.



# COMMUNITY CONSULTATION

The community of Drake were invited to brainstorm ideas and issues for the future of the village. Tenterfield Shire Council engaged a Landscape Architect to develop plans for civic works and landscaping for the village of Drake. Staff at Tenterfield Shire Council also have viewed the proposed concepts and included future works into the plans.

Residents have prioritised the following ideas for improvements:

1. Improve bus stop area and surrounding vehicular areas
2. Exercise Park to be installed at the Woodward Park.
- 3 Historical Information/Interpretive Signage located around Drake
4. Create a Skate park and pump track in Drake with half basketball court and wall for tennis/soccer
5. Create better walkways, safe crossings and provide pedestrian refuges
6. Fix drainage issue and plant an avenue of trees along Bruxner Highway



# PUBLIC OPEN SPACE

Tenterfield Shire Council along with Drake Progress Association seek to install an exercise area and to install a skate/pump track within the Woodward park for patrons and visitors in the village of Drake.

This enhancement to the playground will ensure a healthier, safer and more inviting location for the community and visitors to the area

Upgrading the car parking and bus stop area will provide a space for the local community, visitors in the village, while creating an appealing and attractive town centre.



# LINKAGES

Footpaths facilitate two primary groups of activities; moving activities and stationary activities. Good footpath design with suitable materials and furniture can successfully cater for both.

- Increase safety for pedestrians.
- Improves facilities for pedestrians (improves accessibility).
- May help to increase walking as a mode of transport (environmental benefits and reduced traffic congestion).
- Walking can improve health and fitness.

Footpath extension from the village center to both the eastern and western ends of the village would allow residents to access the shop and facilities without their car. This will increased use of both spaces, and most importantly link the two spaces together.

Repairs to street drainage will improve the management of storm water along the street.



# LANDSCAPING



- Proposed Tree planting along Bruxner Highway once drainage has been resolved.
- Proposed tree planting around the local streets, and Bus stop area to provide a more welcoming space to visit and stay
- Installation of new skate/pump track and exercise equipment will provide the children of the village and visitors to the area somewhere to meet up and play or have an exercise session with friends.
- Upgrades to the garden in Woodward park will provide a meeting place for the residents and visitors to the village.
- Landscaping around the Drake Community Hall



# TOURISM

Drake is a small rural town of around 400 people and is located 44 km east of Tenterfield. The town boomed in the late 1880s following the discovery of gold to the west of the village.

Today, Drake offers many exciting outdoor activities, including water activities on the Clarence River, exploring Girard State Forest and Rover Park 4WD & Motorcycle Park for the more adventurous! You can also visit the nearby Paddys Flat Tank Traps and learn about this important part of WWII history.

Drake Village Resource Centre homes an art gallery, cafe, and store, just across the road the local Lunatic Hotel is available for a delish meal and beverage.

## Ways to promote Tourism

- Develop an updated tourism brochure that would engage visitors and promote places of interest.
- Work with National Parks
- Include in advertising campaigns - showcasing the fascinating history and spectacular bush landscapes.



# IMPORTANT INFORMATION

## MOVING FORWARD

A range of village improvements have been proposed for Drake responding to ideas raised during analysis and in consultation with the community. Drake has a lively community and presents itself as a great place to live and to visit. Low cost improvements include footpath, trees planting and interpretative signage. Higher cost items include car parking area and Exercise equipment and skate/pump track.

The Drake Concept Plan will provide a blueprint for future village improvements and a focus for improving the functioning and aesthetics of the village as funds and resources become available.

The Concept Plan acts as a valuable tool in seeking funding for the projects identified in to the future.

## CONTACT

Tenterfield Shire Council

247 Rouse Street  
(PO Box 214)  
TENTERFIELD NSW 2372

Phone: 02 6736 6000  
Email: [council@tenterfield.nsw.gov.au](mailto:council@tenterfield.nsw.gov.au)  
Website: [www.tenterfield.nsw.gov.au](http://www.tenterfield.nsw.gov.au)

Proudly funded by

